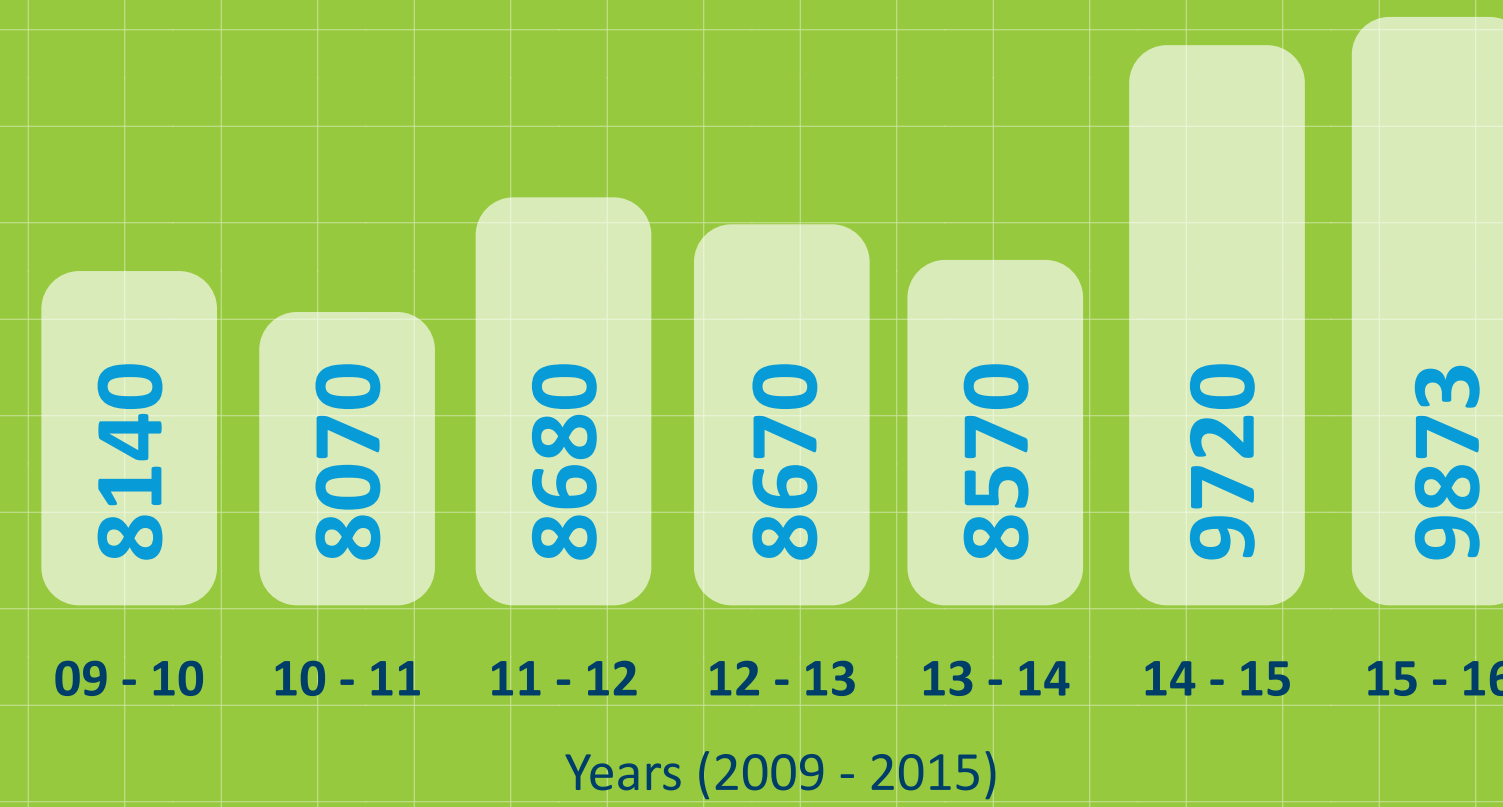


DIVERTING UN-DISPLACED FRACTURES FROM EMERGENCY DEPARTMENTS TO PRIMARY CARE

presentations

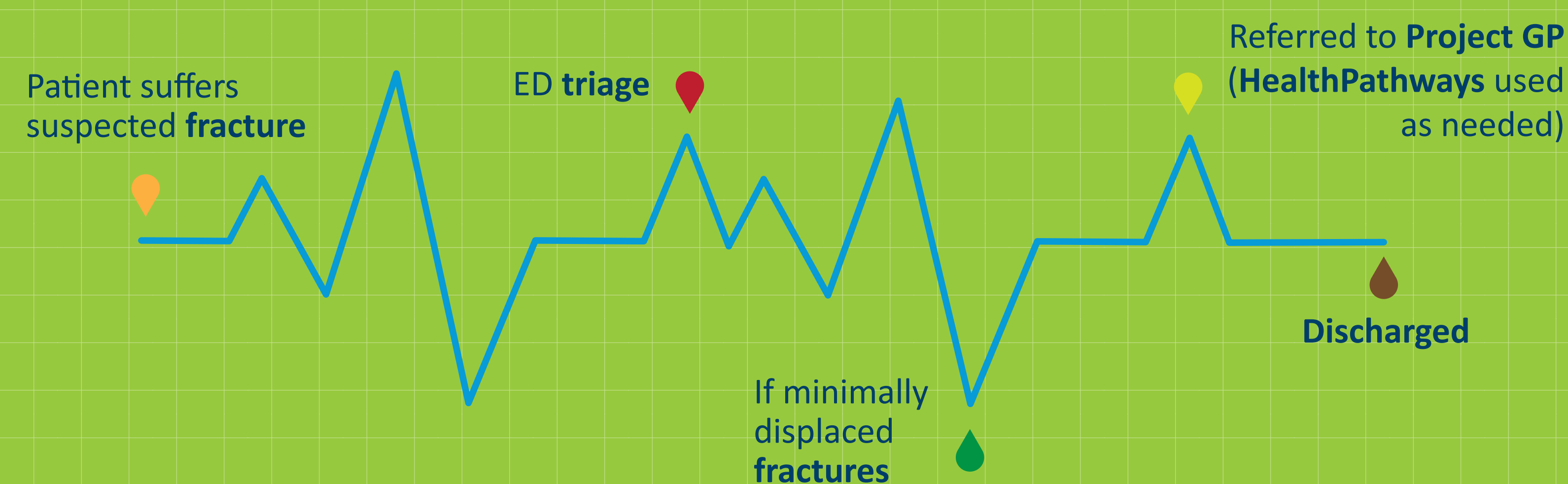


Category 4 and 5 fractures of the limbs presented at EDs in the EMPHN catchment.

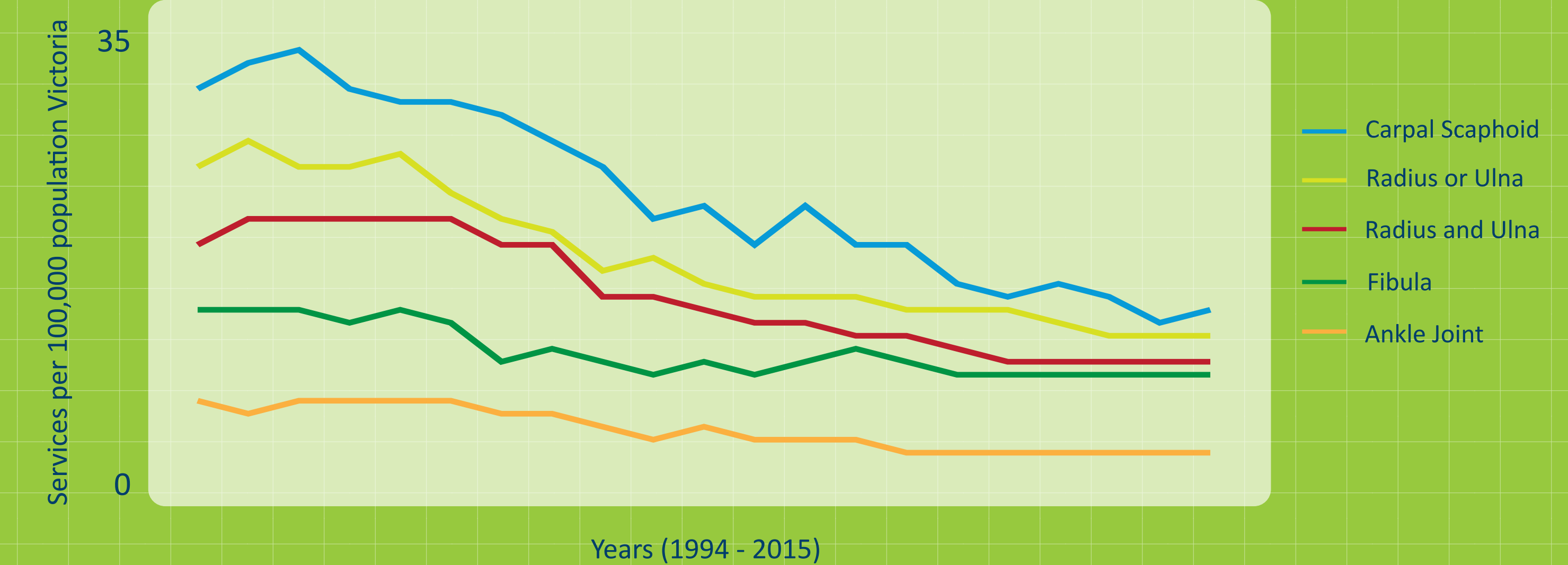
overview

1. Reducing emergency department presentations and avoiding hospitalisations is **key** for the **long-term sustainability** of the Australian healthcare system.
2. An effective method of achieving this is by **identifying medical conditions** presented at hospitals **that can be easily treated at the primary level**.
3. With this in mind, the project worked specifically to **upskill general practitioners to effectively manage and treat** simple un-displaced fractures within general practice. This resulted in significantly reduced fracture clinic wait times.
4. GPs were upskilled through **training sessions** provided by specialists. The **orthopaedic pathway suite** was used as a resource to guide GPs toward patient care, allowing for **increased education, knowledge and improved service connectivity** in treating fractures in a practice setting.

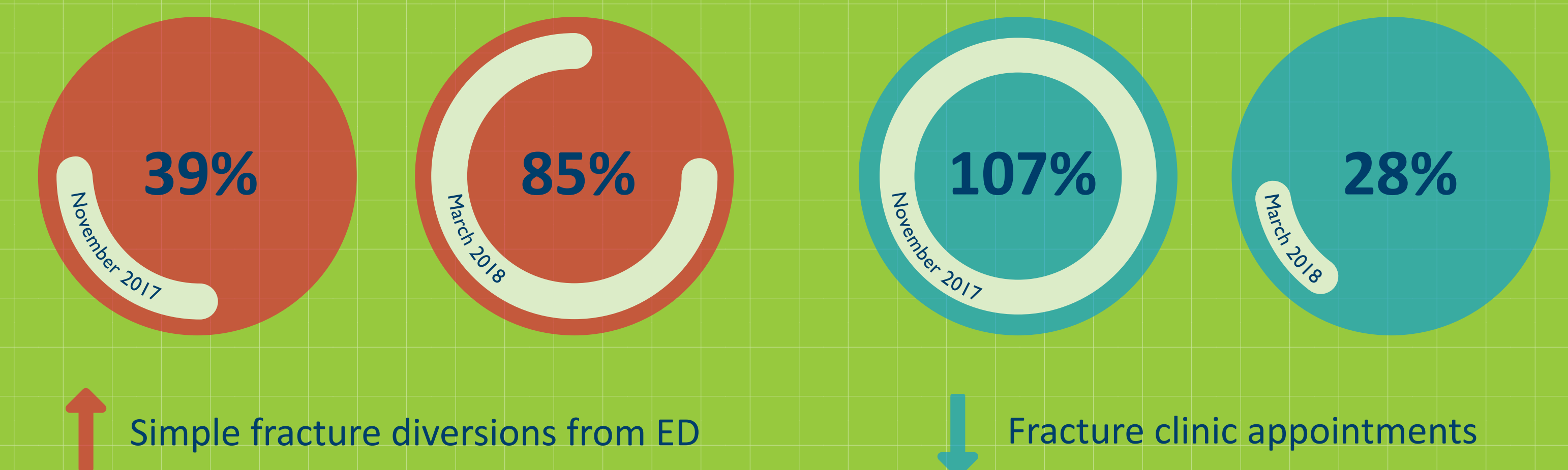
structure of fracture diversions



GP consults



results so far Northern Hospital



outcomes

- Demonstrated value by combining education, redesign and **HealthPathways Melbourne** to **reduce hospitalisations** from simple fractures.
- Highlighted the **importance of HealthPathways Melbourne** to inform the process of diversions for other clinically appropriate and agreed conditions.
- Presented an **exciting opportunity for the future of HealthPathways** in the broader Australian health sector.